

Integrating the Environmental Element of CSR into your Business

Donna Dagg, Sustainable Development Coordinator

Agenda

- Manitoba Lotteries Corporation (MLC)
- Structure and responsibilities
- Understanding your impacts
- Governance
- Transforming business tools and processes
- Procurement/sustainable procurement
- Biggest challenges
- Sustainability model

Manitoba Lotteries Corporation

- Crown Corporation - conduct and manage gaming in the province of MB
 - Gaming (VLT's and Casinos), ticket sales, restaurants and entertainment
 - 1,600 employees
- Net revenue generated goes to the Province to support government programming

CSR structure and responsibilities

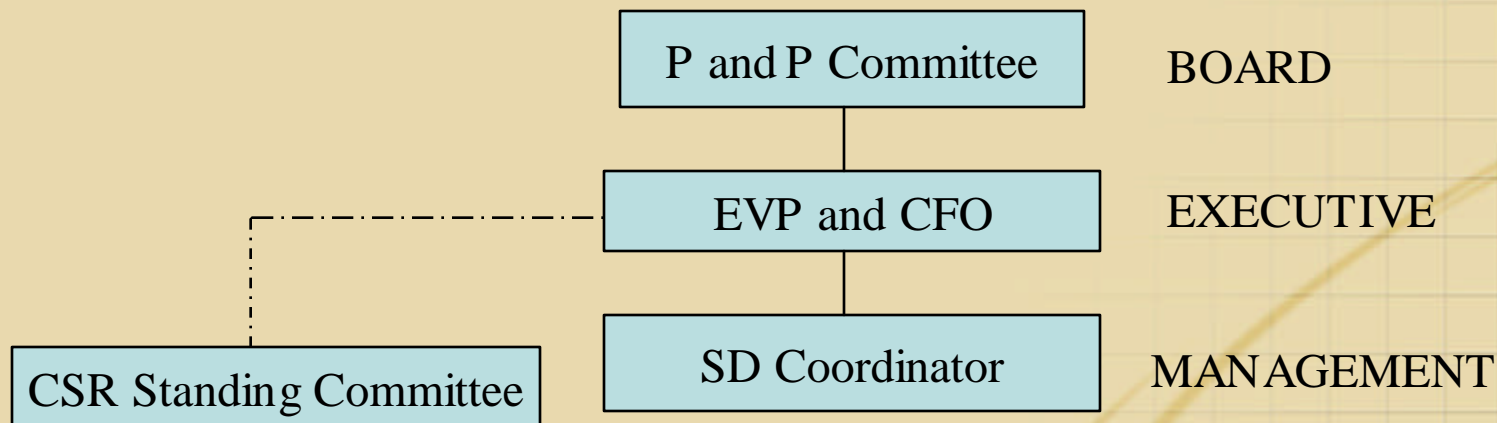
- Governance
- Executive Direction and Support
- Use of existing business processes
- Expertise within Departments
- Integrate an SD Coordinator into Finance Department
 - Understand local/global issues
 - Support business decision makers
 - Provide ongoing environmental education and awareness

Understanding your environmental impacts

- Green areas of focus at MLC
 - Solid waste generation
 - Energy consumption
 - Water consumption
 - Fleet management
 - Procurement

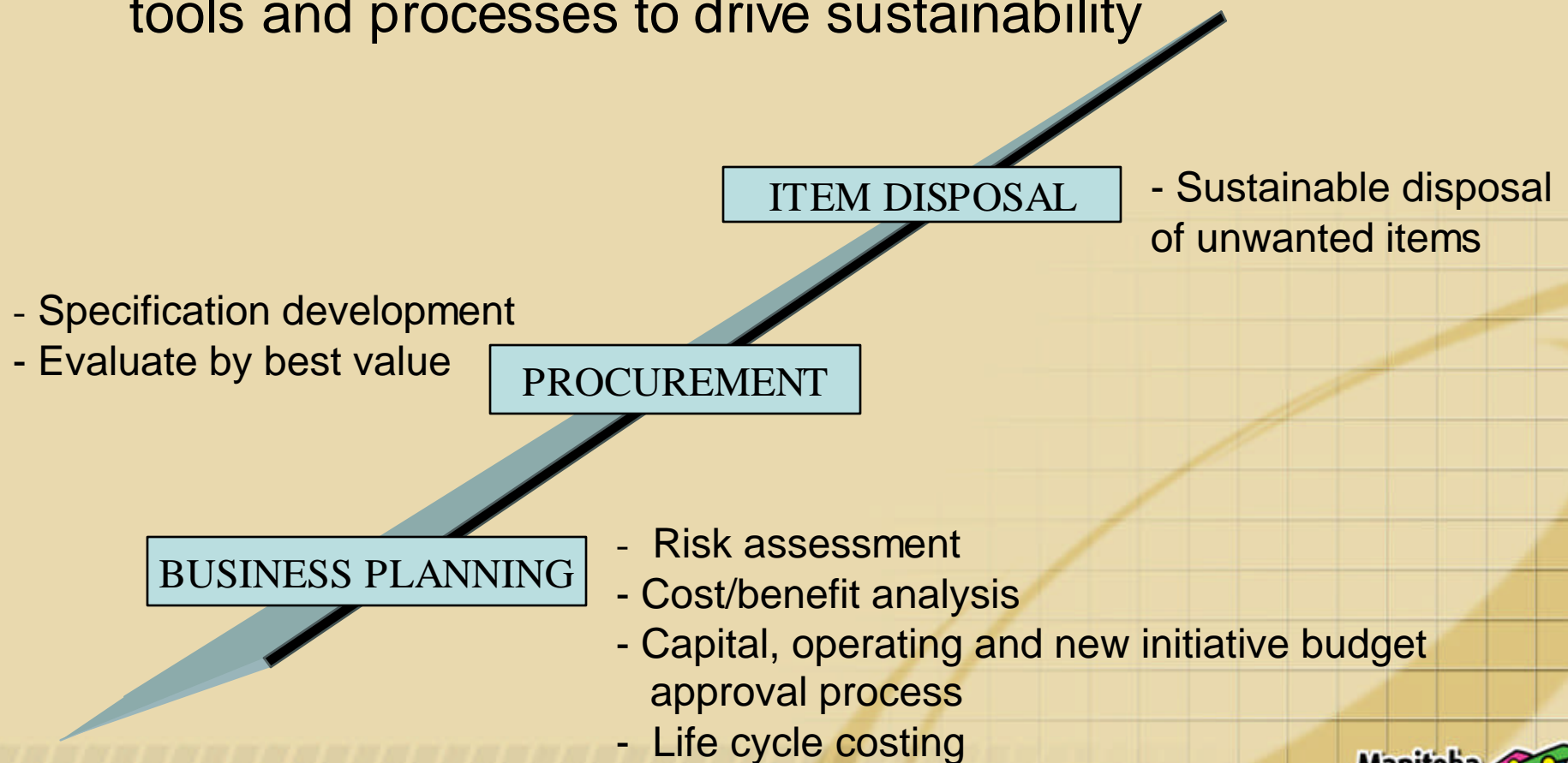
Governance

“Sustainable Development – ensure impacts are considered when evaluating and carrying out our business decisions.” – CSR Policy



Transforming business tools and processes

- Use the Managers and strength of existing business tools and processes to drive sustainability



Procurement versus sustainable procurement

- Procurement -acquisition of goods and services on the best possible terms
 - price and quality - with a view to maximizing benefits for the organization.
- Sustainable procurement broadens the requirements of the procuring organization
 - includes external concerns – maximizing the benefits for the organization and society.

Biggest challenges

- Overcoming the myth that green is costly
 - Life cycle/full cost
 - Risk mitigation
 - Peoples values
- Finding “legitimate” environmentally friendly products and services
 - Product green attributes
 - Zero waste manufacturing
- Finding local services to support sustainability

Environmental Sustainability model

- Outline the requirement for environmental value in a Governing Policy
- All business decision makers are responsible for sustainability
- Provide tools to support sustainability
 - Modify existing business processes to drive sustainability
 - Provide expertise/education and awareness to support sustainable decisions